



APGO Milestone 1 Curriculum Inpatient Obstetrics

This case incorporates the following Milestones:

OB 2: Care of Patients in the Intrapartum Period

- Demonstrates knowledge of routine uncomplicated Intrapartum care including normal labor

OB 4: Obstetrical Technical Skills

- Demonstrates basic surgical principles, including use of universal precautions and aseptic technique
- Performs basic procedures, including speculum examination and cervical examination

OB 5: Immediate Care of the Newborn

- Performs initial warming and drying of a non-depressed infant

PB 2: Quality Improvement Process: Systematically analyze practice using QI methods and implement changes with the goal of practice improvement

- Has a commitment to self-evaluation, lifelong learning, and patient safety

PR 1: Compassion, Integrity, and Respect for Others

- Understands the importance of compassion, integrity, and respect for others
- Demonstrates sensitivity and responsiveness to patients

This case incorporates the following Entrustable Professional Activities (EPAs):

EPA 1: Gather a patient history and perform a physical examination

EPA 4: Enter and discuss orders and prescriptions

EPA 7: Form clinical questions and retrieve evidence to advance patient care

Inpatient Obstetrics

EPA 10: Recognize a patient requiring urgent / emergent care and initiate evaluation and management

EPA 12: Perform general procedures of a physician

This case incorporates the following Basic Clinical Skills (BCS) checklists:

Intrapartum Examination

Normal Spontaneous Vaginal Delivery

Inpatient Obstetrics

Case:

Mary Smith is a 27-year-old G2P1 woman at 38-weeks gestation presents to the Labor and Delivery Department complaining of lower abdominal pain.

Inpatient Obstetrics

Develop a differential diagnosis for abdominal pain in a pregnant woman (OB 2) (EPA 7)

Learner Task: Develop a differential diagnosis for abdominal pain in a pregnant woman.

Educator Checklist: Differential Diagnosis for Abdominal Pain in a Pregnant Woman

Mark the appropriate column to indicate whether the learner included each element in his or her response. When completed, tally the “Included” column to calculate the learner’s score.

	Included =1	Not included =0
Labor		
Latent labor		
Gastroenteritis		
Placental abruption		
Cystitis		

Inpatient Obstetrics

Obtain a medical history in a pregnant woman with abdominal pain (OB 2) (EPA 1)

Learner Task: Obtain a medical history in a pregnant woman with abdominal pain.

Educator Script: Provide the following pertinent patient history of a pregnant woman with abdominal pain as asked by the learner:

HPI: Gravida 2, Para 1, 38 weeks plus 3 days by LMP and US dating. Patient is in town for her sister's wedding and noticed leakage of clear fluid 4 hours ago. Patient complains of non-radiating lower abdominal pain that began 2 hours ago. Pain is intermittent, every 4-5 minutes, each episode lasting for 30 seconds. Nothing makes the pain better or worse. +FM, No VB. Denies nausea, vomiting, pain/burning on urination. Patient is a non-smoker, denies hx of drug abuse or trauma.

PMH: None

PSH: None

Meds: Prenatal Vitamins

Allergies: Penicillin>anaphylaxis

P Ob Hx: NSVD-female infant weighing 6 pounds, 12 oz. She was in labor for 36 hours and pushed for 3 hours. Baby spent one week in NICU for GBS infection.

Prenatal Labs: O+, antibody negative, RPR-NR, Rubella Immune, Hep B Surface antigen negative, HIV negative, GC negative, Hemoglobin electrophoresis AA, CF screen negative, Pap test negative for malignancy, 50 gm Oral Glucose Challenge Test 115, GBS+.

First and second trimester ultrasound: Unremarkable, c/w LMP.

P Gyn Hx: Menarche at age 13, menstrual cycles q28-30 days lasting 4-6 days, denies dysmenorrhea or dyspareunia, coitarche at age 17, 5 lifetime male partners, denies history of sexually transmitted infections or abnormal Pap test.

Inpatient Obstetrics

Educator Checklist: HPI

Mark the appropriate column to indicate whether the learner included each element in his or her response. When completed, tally the “Included” column to calculate the learner’s score.

Inquires about:	Included =1	Not included =0
Onset of pain		
Frequency of contractions		
Vaginal Bleeding		
Leaking fluid, to include clear/meconium staining		
Fetal movement		
GI symptoms: Nausea/vomiting/bowel movements		
Urinary complaints: dysuria, hematuria, urgency, frequency		
Social: trauma or cocaine		

Educator Checklist: History Taking

Mark the appropriate column to indicate whether the learner included each element in his or her response. When completed, tally the “Included” column to calculate the learner’s score.

Inquires about:	Included	Not included
PMH		
PSH		
P Ob Hx		
Prenatal labs		
P Gyn Hx		
Medications		
Allergies		

Inpatient Obstetrics

Perform a focused physical examination on a pregnant woman with abdominal pain (OB 4) (EPA 1) (EPA 12) (BCS Pelvic Examination) (BCS Sterile Technique)

Learner Task: Perform a focused physical examination on a pregnant woman with abdominal pain.

Educator Script: Provide the following details of focused physical examination as asked by the learner:

Vital Signs: BP 124/84, P 101, Resp 22, afebrile, EFW 3200 grams

General: awake, alert and oriented x3 in moderate distress with contractions

Heart: N1 S1 S2, RRR, no murmurs, rubs or gallops

Lungs: bilaterally CTA, no wheezes, rales, or rhonchi

Abdomen: +BS, gravid, fundal height 36, non-tender to palpation, no guarding, no rebound

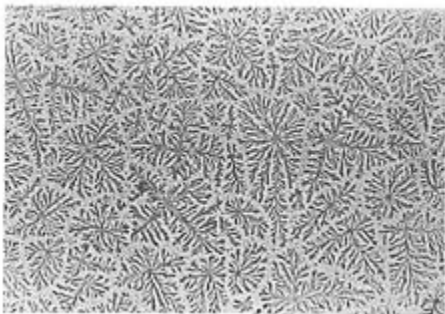
Speculum: no blood, +pooling, +nitrazine

Pelvic: vulva/vagina: normal external genitalia

Cervix: 4/50/0/vertex, wet mount performed

Extremities: no clubbing, cyanosis, or edema

Microscopic examination of vaginal fluid shows:



Inpatient Obstetrics

Educator Checklist: Physical Examination

Mark the appropriate column to indicate whether the learner included each element in his or her response. When completed, tally the "Included" column to calculate the learner's score.

	Included =1	Not included =0
Abdominal exam: fundal height and tenderness between UCs		
Leopold/fetal lie		
Performs speculum exam and collects specimen		
Performs intrapartum examination		
Identifies positive nitrazine and ferning		

Educator Checklist: Intrapartum Examination

Mark the appropriate column to indicate whether the learner included each element in his or her response. When completed, tally the "Included" column to calculate the learner's score.

	Included =1	Not included =0
Describes the benefits, risks, and indications for cervical assessment		
Describes the technique of properly assessing dilation, effacement, and station.		
Explains procedure to patient		
Puts on gloves in a sterile fashion		

Inpatient Obstetrics

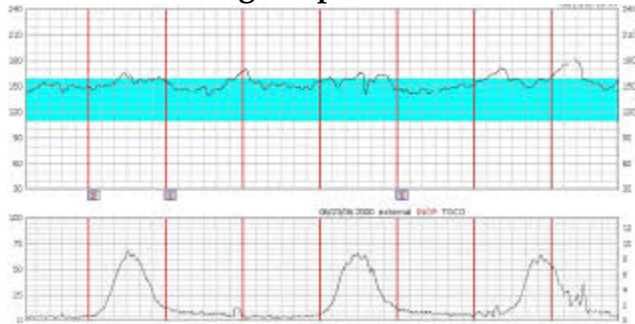
	Included =1	Not included =0
Uses lubricant on two fingers that will be used to perform vaginal examination		
Uses non-dominant hand to separate labia		
Use two fingers of the dominant hand to assess the cervix		
Assesses presenting part		
Accurately assesses cervical dilation		
Accurately assesses cervical effacement		
Demonstrates appropriate sterile technique throughout examination		

Inpatient Obstetrics

Interpret a fetal heart rate tracing (OB 2)

Learner Task: The attending is finishing a procedure in another room and asks if there is anything concerning about the following fetal heart rate tracing. Report the fetal heart rate findings and discuss fetal heart rate features which could be concerning.

Fetal Monitoring Strip



Educator Checklist: Fetal Heart Rate Tracing

Mark the appropriate column to indicate whether the learner included each element in his or her response. When completed, tally the “Included” column to calculate the learner’s score.

	Included =1	Not included =0
Identifies baseline heart		
Identifies accelerations		
Identifies contractions		
Discusses types of decelerations and FHR tracing without accelerations		

Inpatient Obstetrics

Develop an appropriate treatment plan and write orders (EPA 4) (EPA 10) (EPA 12)

Learner Task: The nurse asks for the plan and orders for Ms. Mary Smith. Develop an appropriate treatment plan and write orders.

Educator Checklist: Treatment Plan/Order

Mark the appropriate column to indicate whether the learner included each element in his or her response. When completed, tally the “Included” column to calculate the learner’s score.

	Included =1	Not included =0
Admits to L&D		
Diagnosis: active labor		
Condition: stable		
Vitals: routine		
Allergies: penicillin		
Activity: as per hospital protocol		
Nursing: routine		
Diet: NP		
Start IV		
Blood type and Rh screen		
CBC		
Recognizes needs for IV antibiotics		
Pain management		

Inpatient Obstetrics

Demonstrate Compassion, Integrity, and Respect for Others (PROF 1)

Learner Task: Two hours later, the patient is asking questions as to how long her labor will be and what she should expect this time. She appears anxious and is concerned regarding prior GBS-affected baby. Address the patient's concerns/issues.

Educator Checklist: Professionalism

Mark the appropriate column to indicate whether the learner included each element in his or her response. When completed, tally the "Included" column to calculate the learner's score.

	Included =1	Not included =0
Student acknowledges patient's anxiety		
Student addresses patient's concerns		
Student asks about additional questions or concerns		

Inpatient Obstetrics

Systematically analyze practice using quality improvement methods and implement changes with the goal of practice improvement (PBL 2)

Learner Task: The cross-covering nurse has the IV bag labeled with penicillin for Jane Smith. She asks is it okay to administer the antibiotic to your patient Jane Smith for her GBS+ status. Address this nursing concern.

Educator Checklist: Patient Safety

Mark the appropriate column to indicate whether the learner included each element in his or her response. When completed, tally the "Included" column to calculate the learner's score.

	Included =1	Not included =0
Recognizes allergy could affect antibiotic choice		
Seeks out the information he/she is lacking from acceptable sources		
Identifies wrong patient for medication		

Inpatient Obstetrics

Identify normal/abnormal labor progress, stages of labor and cardinal movements of labor (OB 2)

Learner Task: Discuss the patient's labor progress, stages of labor and the cardinal movements of labor, and any future labor management actions with the attending.

Educator Checklist: Labor

Mark the appropriate column to indicate whether the learner included each element in his or her response. When completed, tally the "Included" column to calculate the learner's score.

	Included =1	Not included =0
Describes stages of labor		
Identifies normal and abnormal labor progress		
Describes the cardinal movements of labor		
Student re-examines patient		

Inpatient Obstetrics

Management of labor (OB 4) (OB 5) (EPA 10) (EPA 12)

Learner Task: Two hours after admission, the patient is found to be 7 cm dilated and requests an epidural. The patient receives an epidural. Two hours later the nurse calls you because your patient is complaining about pressure. Patient is FD/100% effaced/+1 station. Discuss future management of labor.

Educator Checklist: Delivery

Mark the appropriate column to indicate whether the learner included each element in his or her response. When completed, tally the "Included" column to calculate the learner's score.

	Included =1	Not included =0
Describes the three stages of labor		
Describes the cardinal movements of labor		
Describes the steps of a normal vaginal delivery		
Assesses initial fetal station		
Assesses initial fetal position		
Protects perineum		
Delivers the fetal head		
Watches for restitution		
Assesses for nuchal cord		
Delivery of the anterior shoulder		
Delivery of the posterior shoulder		
Delivery of torso and legs		
Clamps and cuts umbilical cord		

Inpatient Obstetrics

	Included =1	Not included =0
Initiates warming and drying of depressed infant		
Delivers the placenta		
Checks placenta		
Examines cervix & perineum for lacerations		
Massages fundus appropriately (before or after placenta)		
Delivery type (NSVD)		
Infant weight		
Apgars at 1 and 5 minutes		
Delivery position		
Presence or absence of nuchal cord		
Description of amniotic fluid (presence or absence of meconium)		
Delivery of placenta		
Description of placenta and cord		
Description of lacerations (presence or absence)		
Estimated blood loss		

Inpatient Obstetrics

Educator Checklist: Neonatal Warming and Drying of Non-Depressed Infant

Mark the appropriate column to indicate whether the learner included each element in his or her response. When completed, tally the "Included" column to calculate the learner's score.

	Included =1	Not included =0
Dries infant		
Places baby skin-to-skin with mother		